

XSUIM Version 2.1 ERN

Dennis Ross March 2008

XSUIM is a FileMaker Pro utility for importing users into Mac OS X Server. It is available from <http://www.shoal.net.au/~dross>

Versions of XSUIM preceding 2.1 will not work properly with Oasis exports carrying the ERN data. ERN is a unique student identifier implemented across NSW Public Schools on March 17 2008. This document outlines the process of updating an older version of XSUIM version to the new.

New installations of Mac OS X server should use XSUIM version 2.1 in the same way as earlier versions. ERN will be catered for.

Differences between XSUIM 2.1 and earlier versions

- Each teacher's password is set to the *number* assigned to them in the Excel file *Staff.xls*
- Earlier versions of XSUIM calculated a userid for each user based on their year cohort and the Oasis generated student ID. ERN has replaced the student ID in Oasis and is now used as the userid for OS X Server student accounts without modification.
- First and Last names are imported as well as full names

Updating

Essentially I am not going to recommend an update to your old database. Just start a fresh XSUIM database using version 2.1 and then tidy up the accounts of a few of your users. The steps are detailed below.

The only issue that may occur will be in the case of duplicate usernames. Home directories can be "lost" in certain circumstances.

How This Can Happen

XSUIM creates usernames like "jsmith" for Jim Smith and it regularly finds there are duplicates caused by names like Judy Smith and Jenny Smith and Jasmine Smith and so on. XSUIM tackles this by appending a number to each duplicate – jsmith10, jsmith11, jsmith12 etc. This username, or short name, is used to uniquely identify the user and also becomes the name of their home folder when imported to WGM.

To reliably create duplicates XSUIM needs a history of what it has done in the past. By starting a new database we are throwing away that history and may find that WGM has a student recorded as "jsmith10" and the original jsmith has left the school. XSUIM will now present WGM with a "new" record "jsmith". If this happens "jsmith" won't be able to find his/her old home directory because it will be called "jsmith10".

The problem can compound with further duplicates. For example "jsmith11" and "jsmith12".

A similar thing can happen to **Xweb** links.

It is important to realise that this will only happen to a few users and it is reasonably easy to fix. The problem will be more one of confusion than anything else.

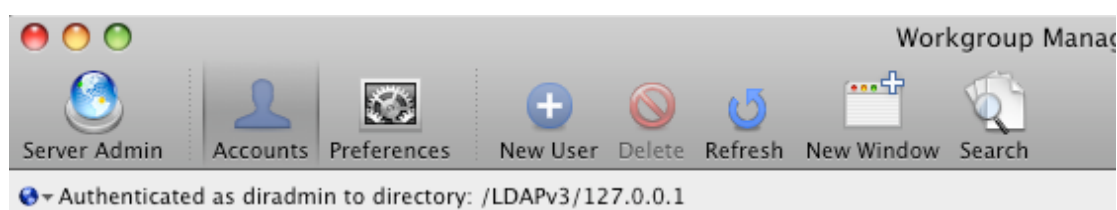
You will need to inspect a list of usernames so that you pick up the duplicate names that may cause a problem.

The Impact of ERN

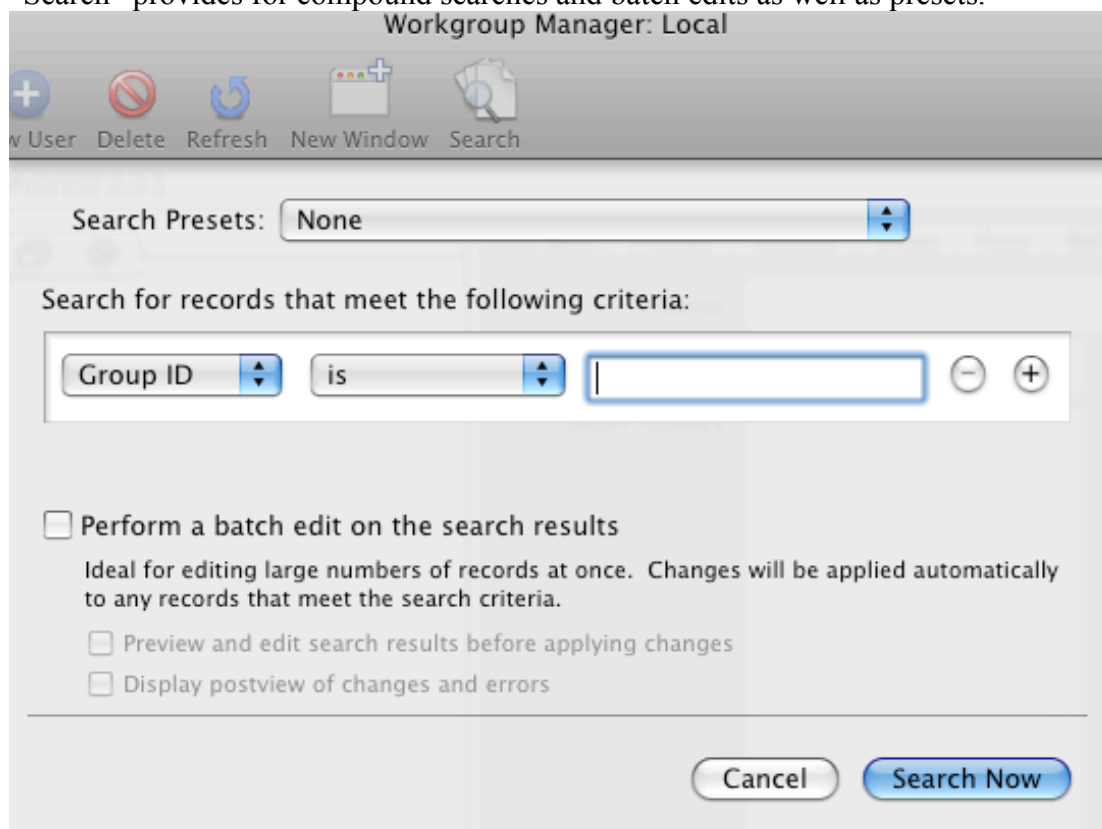
Previously the userid was constructed in such a way to provide meaning to the person managing users in WGM. The first 4 digits represented the year of enrolment of the user. This allowed fairly rapid selection of a year group for various tasks.

ERN offers us no such assistance and no easy way to adapt it to the purpose.

Instead we must now use the Advanced Search option in WGM. This wasn't available when XSUIM was originally designed and actually provides superior functionality to what we have been using. Select the *Search* button at the right of the toolbar.

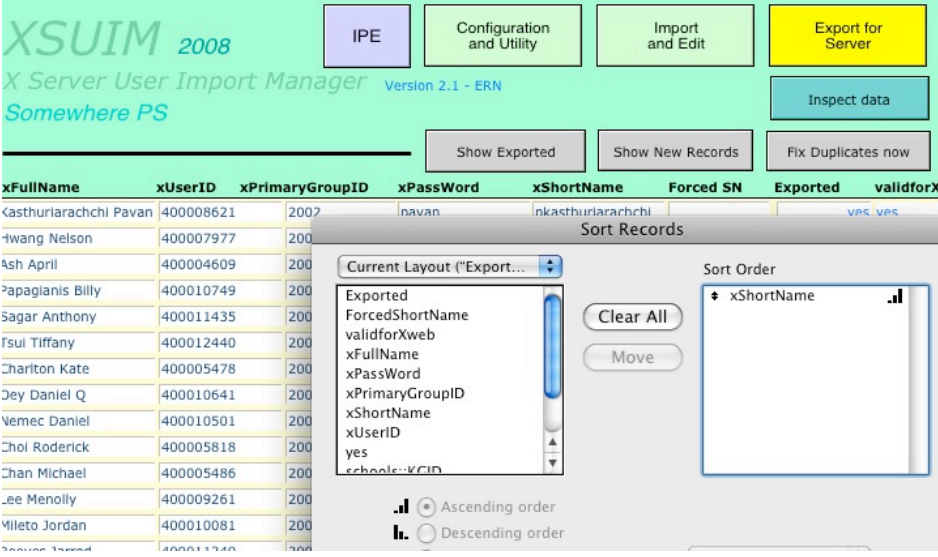
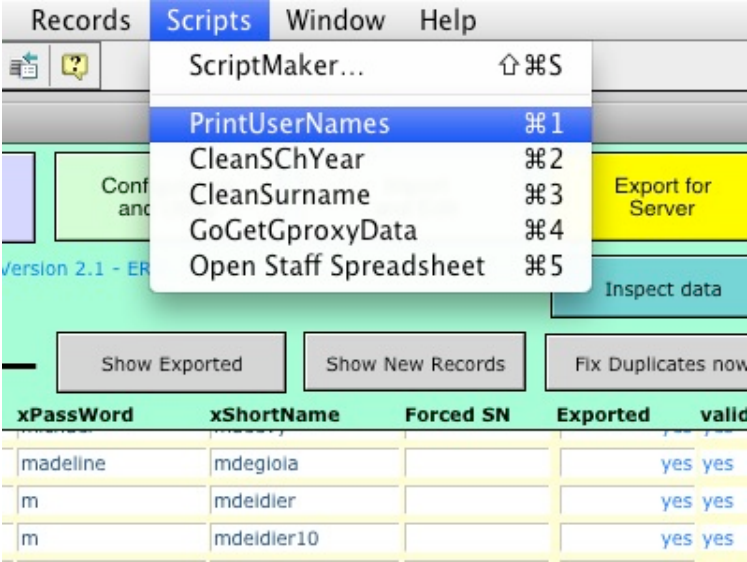


“Search” provides for compound searches and batch edits as well as presets.



Step by Step

1. Get your old data for reference

<p>Start your old XSUIM</p>	<p>Normally this is kept in your Intranet User's sites folder Find a machine that has FileMaker Pro installed on it and log in as the Intranet User</p> <p>Look in the sites folder for a folder called XSUIM</p> <p>If you can't find it there you will need to refer to the person who installed your server.</p>
<p>Go to the Export For Server screen, Sort records by xshortname and print them.</p> <p>Print to pdf will do fine and save quite a bit of paper.</p>	<p>Choose the option Sort Records ... from the Records menu.</p>  <p>From the Scripts menu choose PrintUserNames</p> 

Somewhere PS

Mac OSX Server - Users

xPrimaryGroupID	Surname	PrefName	xFullName	xShortName
2003	Abdallah	Alex	Abdallah Alex	aabdallah
2006	Abdallah	Andrew	Abdallah Andrew10	aabdallah10
2008	Achardi	Akash	Achardi Akash	aachardi
2006	Agapides	Athena	Agapides Athena	aagapides
2008	Agarwal	Aviral	Agarwal Aviral	aagarwal

You will need this printout later. It will show you your existing duplicated shortnames and how they currently appear in WGM.

When finished quit Filemaker and RENAME your old XSUIM folder to XSUIMOLD or similar.

3. Set Up XSUIM 2.1

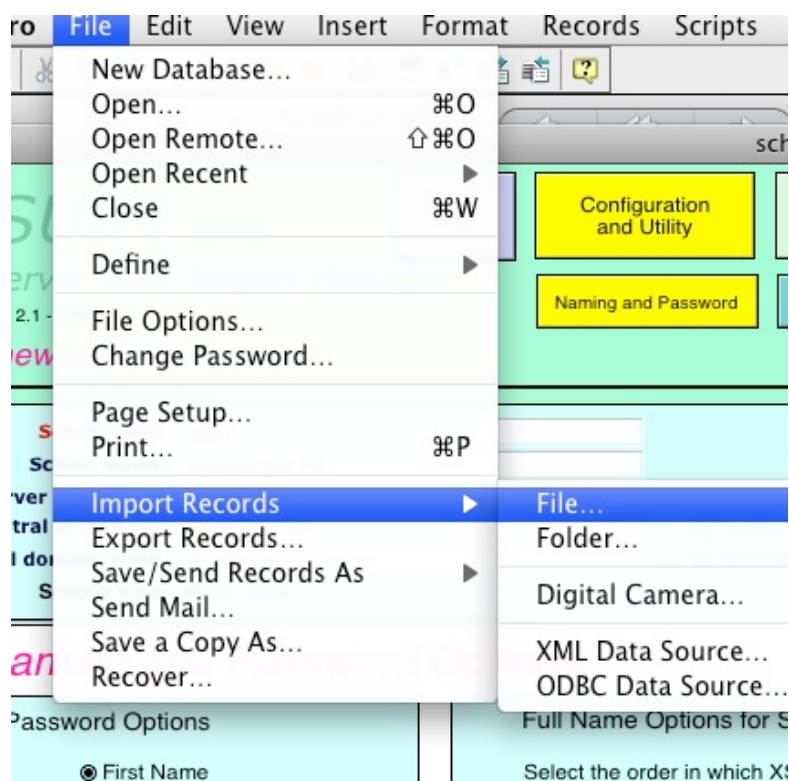
Download XSUIM2.1 Master and **copy** it to the location of the previous one.

Rename the folder to XSUIM.

<http://www.shoal.net.au/~dross>

Import your old configuration data but NOT your student data

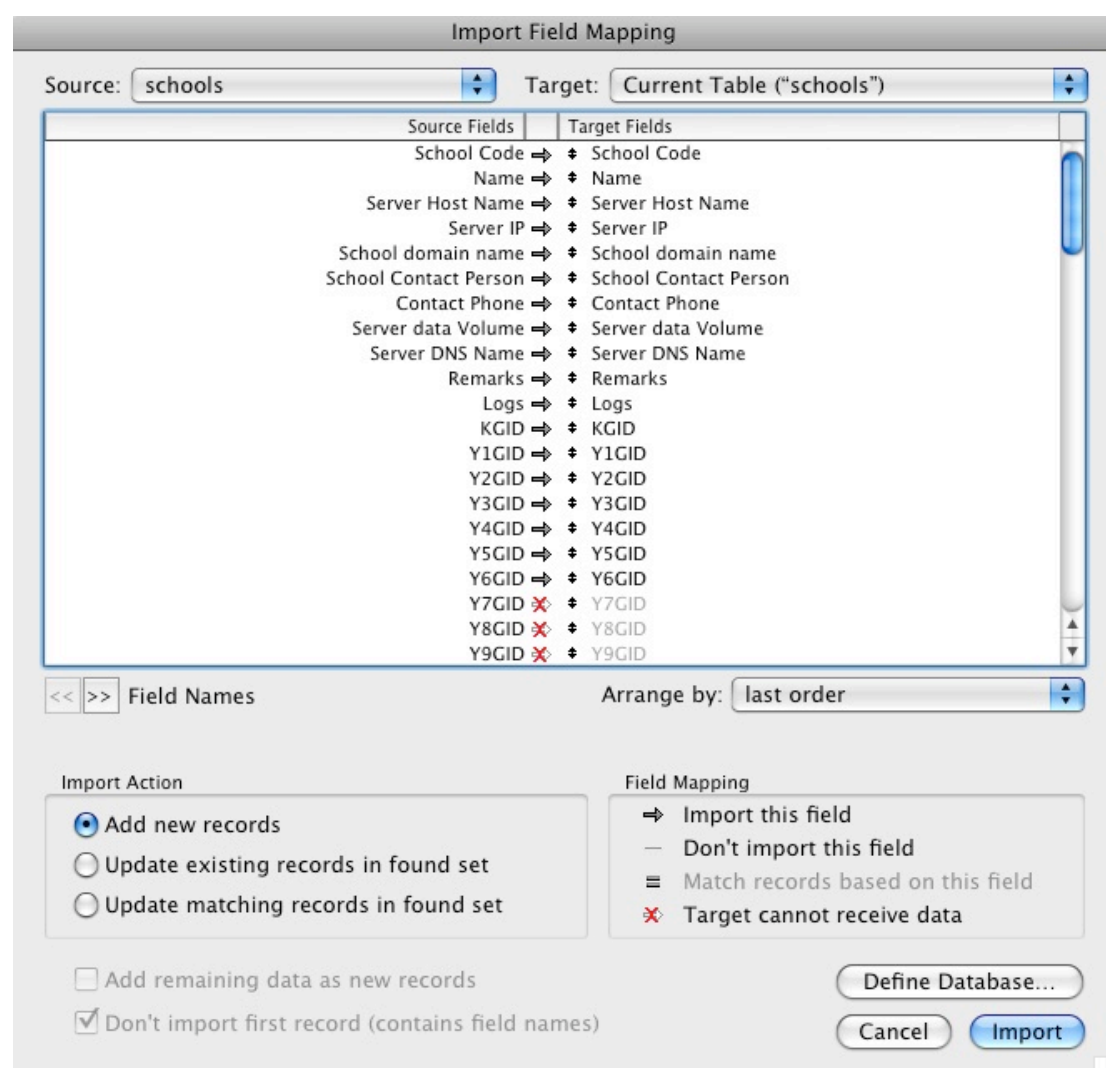
Go to the *Configuration and Utility Screen* and select *Import Records* from the *File Menu*. You will be importing from a Filemaker file



Locate the *Schools.fp7* file in your old XSUIM folder



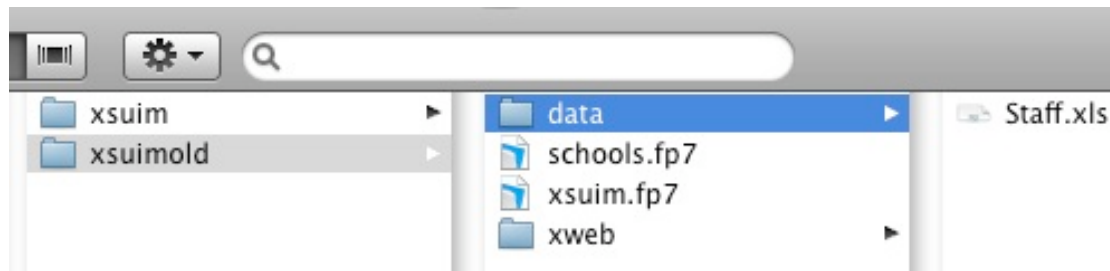
Check that all the field names are aligned correctly before importing



Greyed fields are calculated fields and can't be imported. This is not an error.

After importing cast an eye over the configuration screens to check for any data that doesn't look right.

Copy your staff spreadsheet from the *data* folder of your old XSUIM to the new XSUIM *data* folder.



3. IPE – Import, Process and Export

XSUIM 2008
Version 2.1 - ERN
IPE
Somewhere PS

Import, Process and Export

Oasis
Formerly Gprox Server

Sentral
Formerly Gprox Server

1 Prepare Data

A Get and Copy S_IDS.D file to XSUIM data folder [?]

B Update Staff.xls (Excel document in XSUIM data folder)

Get and Save Sentral Server data now

Update staff now

A Get and Save Gprox user_export.txt to the XSUIM data folder [?]

B Update Staff.xls (Excel document in XSUIM data folder)

2 Import, Process and Export data

XSUIM does this when you click the button to the right.

A Prepares a file of users for import into Work Group Manager

B Creates a fresh copy of XWEB for your intranet.

Import, process and export now

Do you want a printout of users?

Print all users
Print new users
● Don't print

You will be prompted for a printer. Suggest you choose the option Save as PDF rather than risk a paper tangle during this process.

3 Use the Data

A Import the file "XserverUserRecordsFromXSUIM" into WorkGroup Manager and do any other server management required for new users.

B Copy the XWEB folder to your intranet folder.
(Link to your index page if this is the first time)

Both of these are in your XSUIM folder after processing.

Go to the Import and Edit screen or the Export for: Server screen if you need to check your data.

9999

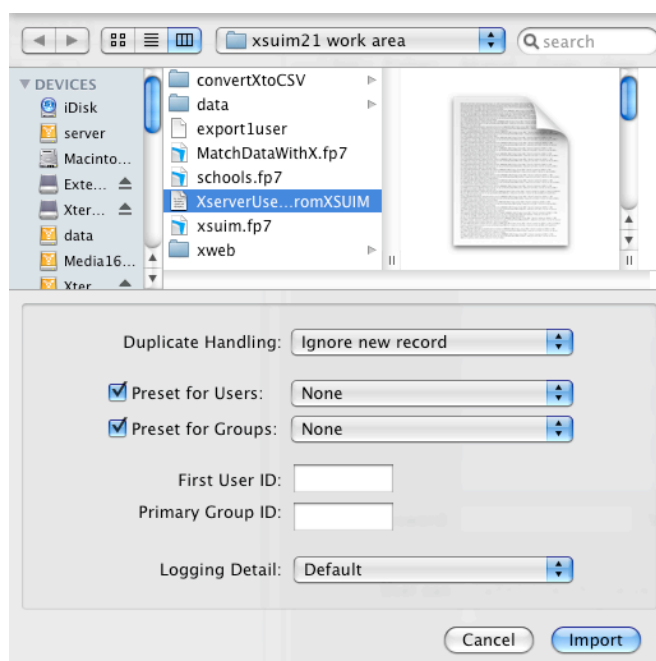
You should now run XSUIM in the usual way and import the result into WGM. Get the Oasis data from Oasis or Sentral, update the staff spreadsheet and press go.

Go to the server and import users into WGM

This should have the effect of adding to WGM users new to the school since the last time you ran XSUIM. It will work normally. The difference will be that your new users will have their ERN as userid and the existing users will stay as they were.

When importing into WGM the import settings should be left as the default - to ignore duplicates, as shown below.

The reason this works is that WGM uses the shortname and not the userid to match the import records with existing. The shortname should remain the same from the various versions of XSUIM – except for the duplicate situation.



4. Tidying Up

It is difficult to be give clear direction as how to proceed. It is probably better if you have some idea of what to look for and a strategy to handle it.

It is possible that jsmith10 or jsmith11 will log in as they have before and not notice a difference. After all nothing has changed for them. The home directory is the same and their username and password is the same.

Perhaps they select from a list to log in. What if there are now two Janet Smiths? Will the child select the correct one?

Just try it in your situation.

What happens later in the year and you've forgotten about this stuff and Julian Smith enrolls? Maybe not a problem different from one you handle day to day?

This situation is very similar to a server re-install. Sometimes the easiest approach is to get everyone to back up their own data and then you wipe everything and start again. This is not necessarily the best approach but one commonly used because it's just too hard otherwise.

It is quite reasonable however for you to back up the data of a few users you know may be a problem, delete them from WGM and then reimport your users. This will replace those that you have deleted with their new information and it will match with XSUIM. Matching with XSUIM means no gotchas are left for the future.

You need to know how big an issue you have. It is probably limited to a handful of users. Use the tools you have and your own knowledge of your school population to know your data. Check all duplicates and have a close look at those where one or more have left the school and will not be in the Oasis records.

Knowing Your Data

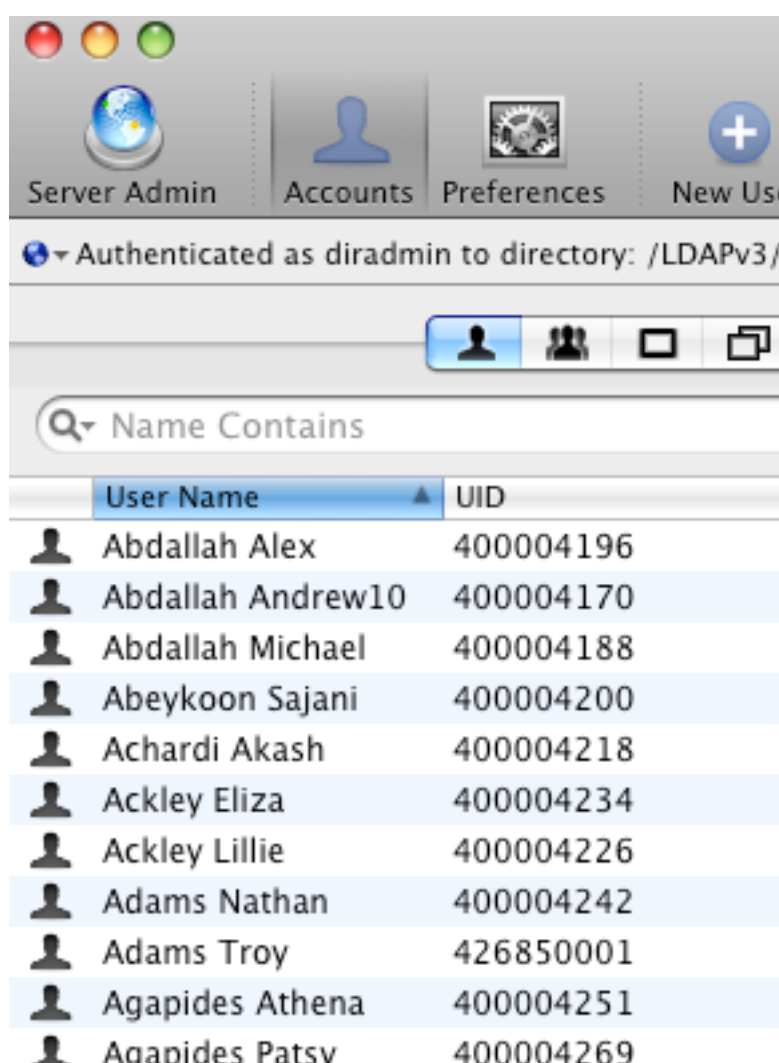
Use the printout of your old data from XSUIM

Somewhere PS

Mac OSX Server - Users

xPrimaryGroupID	Surname	PrefName	xFullName	xShortName
2003	Abdallah	Alex	Abdallah Alex	aabdallah
2006	Abdallah	Andrew	Abdallah Andrew10	aabdallah10
2008	Achardi	Akash	Achardi Akash	aachardi
2006	Agapides	Athena	Agapides Athena	aagapides
2008	Agarwal	Aviral	Agarwal Aviral	aagarwal

to compare with the now situation in WGM



If the information matches you have no issues. If not you may be best advised to selectively delete some users from WGM and then reimport users. Do this **before** your next use of XSUIM.

This will give those users a new home directory when they next log in.

This is quite safe to do if you backup their home directories first and you can place deleted users data so it can be retrieved conveniently. Old data can then be copied back to the various folders in the user's home directory (best done by the user logged in as themselves).

5. Comments

ERN has been a bit of a kick in the head for XSUIM and other software packages which use Oasis data and keyed it around the Oasis ID.

I was concentrating on how the ERN value was being created and completely overlooked the fact that a different ID meant that XSUIM would import all records from Oasis again after the changeover. Obvious when reported – but. Apologies to those who finished up with double the number of student records in XSUIM and left wondering what was happening.

FileMaker Pro versions have had some issues with various updates to Mac OS X. It is important for the correct operation of XSUIM that your version of FileMaker is the right one for your version of Mac OS X.

XSUIM was created in FileMakerPro V 8.0

I can't help with this. You need to check with <http://www.filemakerpro.com>

DR