

20m

18m

16m

14m

12m

10m

8m

6m

SPECIFICATIONS FOR 18 TONNE MODEL

RATED CAPACITY

- 18 Tonnes at 1.26m radius
- 16 Tonnes at 2.01m radius
- 1.50 Tonne at 15.80m radius
- Hook Height 16.75 metres
- Lift Hook block 12.6 tonnes
- Single Line 4.2 tonnes

AXLE LOADINGS

- Front Axle 8000kg
- Rear Axle 11000kg
- TOTAL 19000kg

TURNING CIRCLE

- Outside
- Wheels 7.4 metres

DIMENSIONS

- Overall Length 9.67 metres
- Overall Width 2.50 metres
- Overall Height 3.07 metres

HYDRAULIC WINCH

- Line pull with full drum 4.2T
- 3/2 part fall block or single line, full hook compensation.

CABIN

- ROPS type insulated lock up cabin.

ENGINE

- Hino H07C-T 6 Cylinder Turbo Charged
- 162 kW (217 HP) at 2800 rpm
- 64.7 Nm (477 lbf ft) at 1700 rpm.

TRANSMISSION

- Allison MT643
- 4 Speed fully automatic with lockup available in 3rd/4th whilst driving and 1st-4th in conjunction with the exhaust brake.

TRANSFER CASE

- Two (2) speed AIR SHIFT with AIR SHIFT disconnect to REAR wheels.

HYDRAULIC TANK

- Capacity 255 litres.

FUEL TANK

- Capacity 290 litres.

DRIVE AXLES

- Front and rear heavy duty drive axles. Driver engaged air diff lock on front axle.

DRIVE SHAFTS

- Spicer Series 1610.

BRAKES

- Full air S cam Twin Circuit Brakes front and rear axles.
- Spring applied on rear axle.
- Crane operation hold brake on front wheel. Engine exhaust brake.

TYRES

- 1200 x 20 x 20 PR Duals.

STEERING

- Full Power ORBITROL with twin Hydraulic double acting rams. Priority flow from main pump supply plus electro hydraulic emergency supply.

HYDRAULIC PUMP

- Load sensing axial piston 126 litre/min.

SUSPENSION

- Two (2) Semi elliptic springs on each axle plus TORSION BAR on front axle for stability.

PERFORMANCE

- Maximum - 85kph
- Gradeability - 50%

OPTIONAL EQUIPMENT

- Air Conditioning
- Machinery Hook (10 tonne SWL)
- Spare wheel carrier
- Central greasing
- Fly Jib (2.9m)
- Man Basket
- Spreader Bar
- Six speed synchromesh manual transmission
- Others on application

Specifications subject to change without notice.

PATENTED DESIGN

FRANNA CRANES

FRANNA CRANES PTY. LTD. A.C.N. 010 671 048
570 Curtin Avenue Eagle Farm Brisbane Qld 4009 Australia
Telephone: +61 7 3268 7422 Facsimile: +61 7 3268 2489



ALL TERRAIN LIFT & CARRY MOBILE CRANE



AT-18

FRANNA CRANES





The FRANINA AF-18 is the latest addition in the successful Franina range of all terrain mobile cranes. This machine incorporates many new features which enhance safety, driver ergonomics and improve machine operations.

Built for comfort as well as hard work the cabin offers a spacious interior, a binnacle type dashboard, pilot operated hydraulics and a digital load indicator. Both the hydraulic oil and fuel tank have been integrated around the six cylinder engine in the rear body, with the latest design in adjustable wear pads and boom structure up front.

With this machine you have the power, finesse and versatility to lift almost anything anywhere. Here are some of the many features.

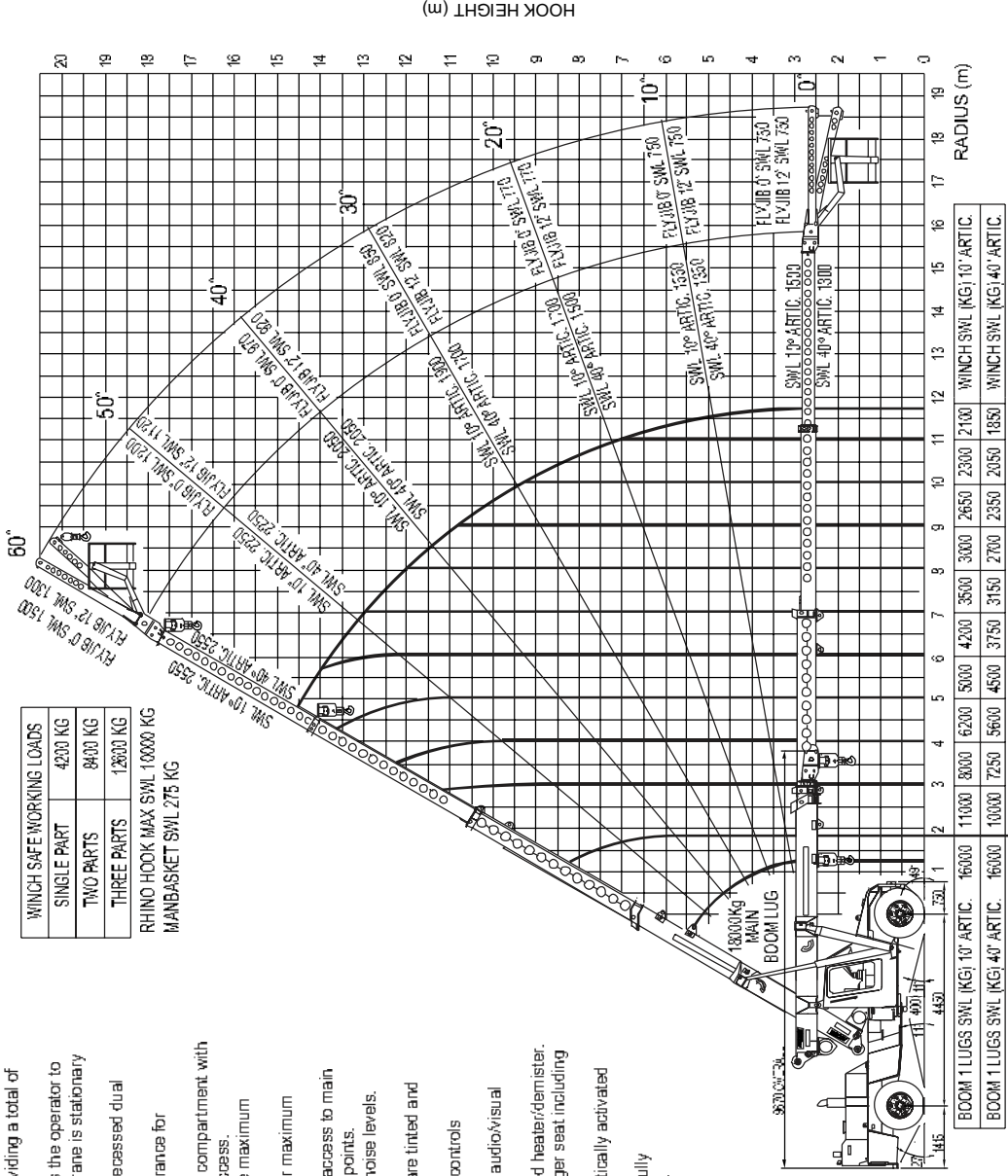
- Hydraulic winch with full hook compensation.
- Synchronised power boom²; part hook block.
- 40° articulation each side of centre providing a total of 80° of slewing arc.
- Exclusive hold brake attachment allows the operator to slew the crane through 80° whilst the crane is stationary and the holding brake is activated.
- 32mm thick steel front plate, with fully recessed dual headlights and blinkers.
- Boom head design with maximum clearance for machinery installation.
- 800 litre front mounted sling and tackle compartment with opening front and top doors for easy access.
- Wide stance boom lift cylinders provide maximum operator's vision.
- Full engine cover hinged rearwards for maximum access to engine and service points.
- Front bonnet cover hinged to allow full access to main hydraulics, pilot hydraulics and service points.
- Upswept exhaust muffler for minimum noise levels.
- Large, zone linked front windscreen.
- Roof, rear and quarter glass windows are tinted and allow greater visibility.
- Full binnacle type instrumentation and controls positioned for ease of operation.
- Robway 1502 Safe Load Indicator with audiovisual overload pre-warning.
- 2 speed windscreen wipers, washer and heater/demister.
- Suspension driver's seat, fixed passenger seat including seat belts.
- Full power orbital steering with automatically activated DC emergency steering.
- Heavy duty front and rear bodies with fully incorporated checker plate mudguards.
- Work lights front and rear.
- Amber rotating light to rear bonnet.



MELBOURNE F1 GRAND PRIX.

WINCH SAFE WORKING LOADS	
SINGLE PART	4200 KG
TWO PARTS	8400 KG
THREE PARTS	12600 KG

RHINO HOOK MAX SWL 10000 KG
MANDASKET SWL 275 KG



NOTE: 1. UNLESS OTHERWISE STATED ALL SWL'S REFER TO LIFTING BY THE WINCH FOR LIFTING BY THE WINCH. PLEASE REFER TO THE SPECIFIC LOADCHART.
2. THE RADIUS CHART IS A SUMMARY OF LOADCHART 165124. REFER TO THE CRANES LOADCHART BEFORE ATTEMPTING A LIFT.